



IS IT FAIR?



Is fairness about everyone getting the same thing? Explore equality, equity, and strategies to help school age staff decide when to encourage sameness and when to consider other options. *Best for staff supervisors.*

Thursday, January 5th, 10AM - 11:30AM

FEE \$20/participant

Register here: <https://www.eventsquid.com/event/19090>

REFOCUS YOUR LENS



Explore four common lenses used to view behavior as communication towards better understanding the messages that school age youth send through their behavior. *Appropriate for all levels of staff.*

Wednesday, January 11, 6:30-7:30PM, Grant funded - NO FEE

Register here: www.njccis.com **EVENT ID 134878**

STRENGTH BASED SUPERVISION



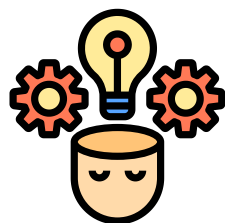
Improve overall disability inclusion and behavior support practices in your school age program by enhancing your strength based staff supervisory skills. *Best for staff supervisors.*

Wednesday, February 1, 10AM - 11:30AM

FEE \$20/participant

Register here: <https://www.eventsquid.com/event/19092>

BEHAVIOR SUPPORT TECHNIQUES



Unpack the WHY of behavior & explore strategies to help children make positive behavior changes. *Appropriate for all levels of staff.*

Wednesday, February 8, 6:30-7:30PM, Grant funded - NO FEE

Register here: www.njccis.com **EVENT ID 134879**

REALISTIC SUPPORTS



Searching for meaningful and engaging ways to support school age youth? Explore how to use the pyramid support model to develop realistic and individualized supports. *Best for staff supervisors.*

Wednesday, March 1, 10AM-11:30AM

FEE: \$20/participant

Register here: <https://www.eventsquid.com/event/19093>



NJSACC: Statewide Network for NJ's Afterschool Communities

CLICKABLE RESOURCE GUIDE

Quality Coaching Team

Contact us for school age quality coaching, technical assistance, training information, great resources, & so much more!

| | | |
|-------------------|---------------------------------|--|
| Dagmar Wojcik | Quality Team Director | dwojcik@njsacc.org |
| Arlyn Jimenez | Quality Coach | ajimenez@njsacc.org |
| Patricia Pugliese | Technical Assistance Specialist | ppugliese@njsacc.org |



CLICK HERE



CLICK HERE



Mizzen by Mott is an innovative tool designed to help you plan and deliver engaging courses, lessons and activities.

CLICK HERE



Access our NJSACC calendar for more information on our upcoming events!

CLICK HERE

